

# Crest Nelskamp Planum Eco PV

The Aesthetic Energy System

**THE ENERGY TRANSITION**

**IS ON THE HOUSE**

PLANUM CONCRETE ROOF TILES AND INTEGRATED SOLAR SYSTEM



[crest-bst.co.uk](https://crest-bst.co.uk)

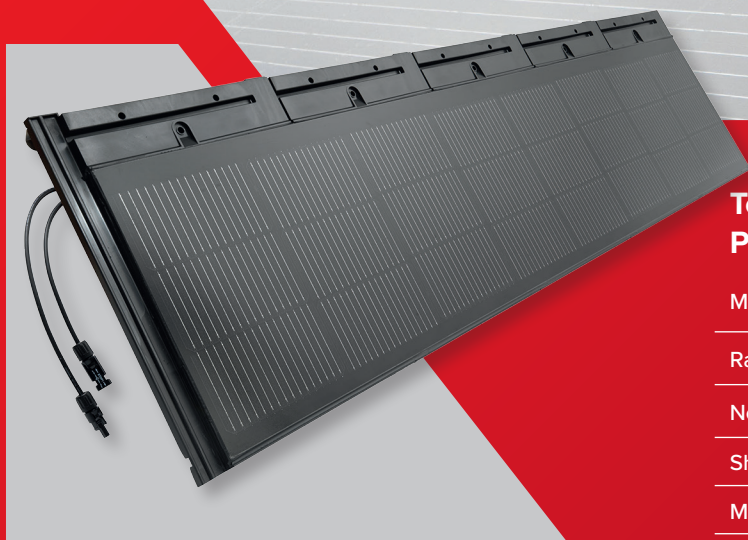
**crest**

**NELSKAMP**

ROOFING & SOLAR SYSTEMS

## PLANUM ROOF TILE AND

## INTEGRATED SOLAR TILE



Swift and easy  
installation with  
3 screws

### Technical Data: Planum Eco PV 1500/92Wp

Module performance:	92 Wp
Rated working current (Imp):	9 A
No-load working voltage (Voc):	12.3 V
Short circuit current (Isc):	9.4 A
Maximum power voltage (Vmp):	10.3 V
Maximum tested system voltage:	1000 V
Temperature coefficient (Voc):	- 0.263 % / °C
Temperature coefficient (Isc):	+0.031 % / °C
Temperature coefficient (Pmpp):	- 0.365 % / °C
Hail resistance	according to IEC 61215 + IEC 61730
Cell efficiency	22.7 %
Tolerance	±5 %
Module weight	approx: 8 kg
Module measures	cover width 5 tiles approx: 1500mm cover length 325mm - 340mm
Roof pitch	25°
Plugs	MC4
Module cable	2 x 4.0 mm <sup>2</sup> each 850 mm long
Min. counter batten height/ rear ventilation	min. 30 mm

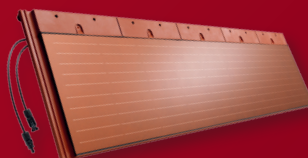
### Characteristics:

- > Modules interlock with the roof tile PLANUM
- > Delivered as a ready to install unit
- > Hanging nib and side interlock for swift, easy and secure laying
- > Only 3 screws per module
- > 15 mm variable cover length
- > Approx. 5.3 m<sup>2</sup> per kWp. approx. 189 Wp/m<sup>2</sup>
- > Product guarantee: 10 years  
Performance guarantee:  
25 years 80 % of rated performance

STC: Intensity of radiation 1.000 W/m<sup>2</sup>, module temperature 25 °C, airmasses = 1.5. July 2025 · technical information subject to change.

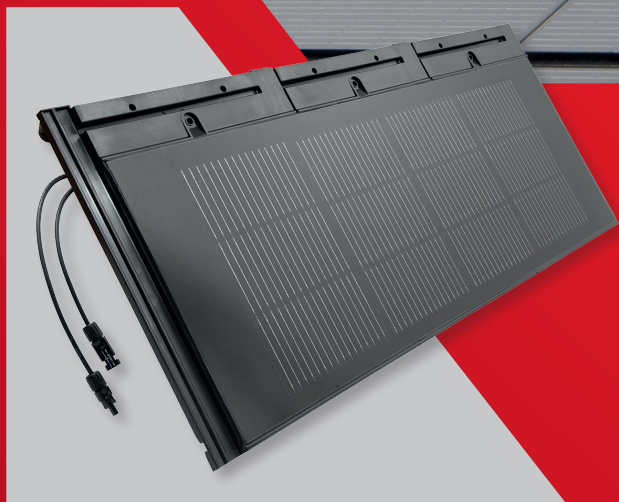


New Planum PV Red Solar Tile  
matches and interlocks perfectly  
with our Cayenne Red and Rustic  
Concrete Roof Tiles.



“The integrated solar panel roof tiles are both a roof covering and electricity generating solution”

Swift and easy installation with 2 screws



### Technical Data: Planum Eco PV 900/48Wp

Module performance:	48 Wp
Rated working current (Impp):	13.14 A
No-load working voltage (Voc):	4.44 V
Short circuit current (Isc):	13.89 A
Maximum power voltage (Vmpp):	3.65 V
Maximum tested system voltage:	600 V
Recommended system voltage:	up to approx: 600 V
Temperature coefficient (Voc):	- 0.26 % / °C
Temperature coefficient (Isc):	+0.046 % / °C
Temperature coefficient (Pmpp):	- 0.3 % / °C
Hail resistance	according to IEC 61215 + IEC 61730
Cell efficiency	25.2%
Tolerance range	±3 %
Module weight	approx: 3.2 kg
Module measures	cover width 3 tiles approx: 900mm cover length 315mm - 340mm
Roof pitch	25°
Plugs	MC4
Module cable	2 x 4.0 mm <sup>2</sup> each 550 mm long
Min. counter batten height/ rear ventilation	min. 30 x 50mm

### Characteristics:

- > Modules interlock with PLANUM Concrete roof tiles.
- > Hanging nibs and interlocking design for quick, easy, and secure installation.
- > Glass-glass module with 3.2 mm tempered solar glass, extremely durable and long-lasting
- > Approx. 5.9 m<sup>2</sup> roof area for 1 kWp, approx. 169 Wp/m<sup>2</sup> roof area
- > Supplied as a ready-to-install unit.
- > Only 2 screws per module.
- > 25 mm variable coverage length.
- > Product warranty: 10 years

#### Performance warranty:

93% of nominal power for 10 years  
83% of nominal power for 25 years

STC: Intensity of radiation 1.000 W/m<sup>2</sup>, module temperature 25 °C, airmasses = 1.5. July 2025 · technical information subject to change.



crest-bst.co.uk





Please note: Roof should be counter battened for installation and ventilation

## Crest Nelskamp Planum Eco PV

All in one continuous integration of solar energy and roof tiles. Our Eco solar roof tile fit seamlessly with our Crest \*Planum concrete flat roof tiles.

The solar panels interlock perfectly and are virtually invisible, with subtle attractive looks, created to meet the various requirements of the housing market.

The solar roof tiles are made from quality materials which have been specifically selected and tested.

All Crest Nelskamp Eco Solar Roof Tiles must be screwed into the underlay roof tile batten via the screw holes and anchored with one tile clip.

The simple and quick installation makes the solar roof tile ideal for both new build and renovation projects.



Tiles are supplied with simple to use standard "Plug In" MC4 connectors

## Warranty & Certification

Crest Nelskamp Eco Solar Roof Tile has been tested to standard EN 7250: Solar energy systems - Integration in roofs and facades - engineer aspects and is MCS certified.

UV testing according to double ECE R110 automotive test - sunlight exposure

Wind load test according to EN 14437: 2004

Snow load test according to EN 1991-1-3

Water resistance test according to EN 2778

Fire safety test according to EN 6063, see NPRCEN / TS 1187: 2012

Electric power generation guaranteed for 25 years from the date of installation;  
80% initial performance according to IEC 61215: 2004

Construction and electrical safety guaranteed according to IEC 61730-1: 2007 and IEC 61730-2: 2004

\*As per European trademark Nr:7287956, filed on 2nd October 2008, the Trademark PLANUM belongs to La Escandella. It is Dachziegelwerke Nelskamp as authorised licensee of the owner allowed to use the mark PLANUM for its concrete product.

# crest

**NELSKAMP**

ROOFING & SOLAR SYSTEMS



01430 432667



info@crest-bst.co.uk



crest-bst.co.uk